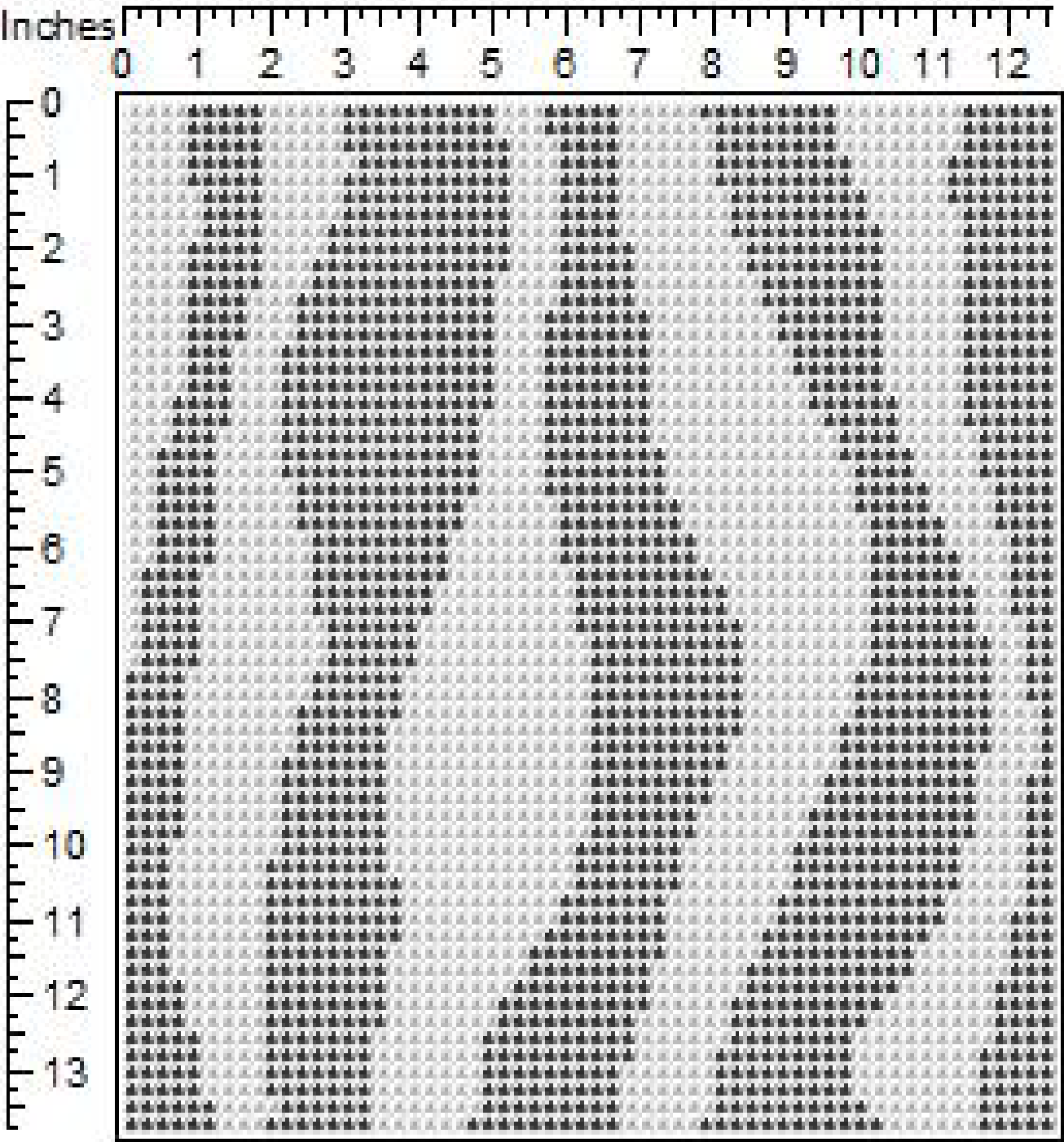
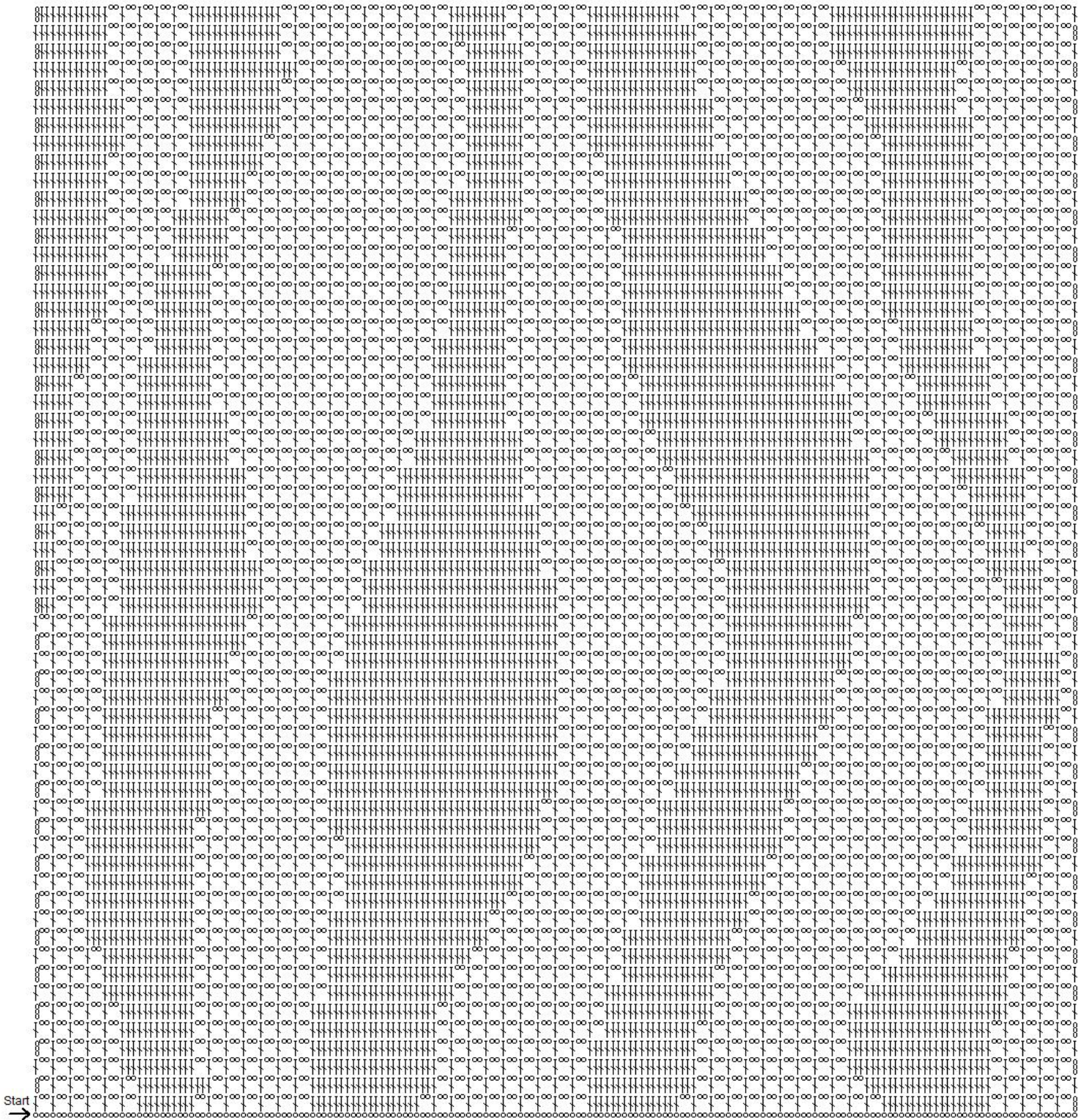


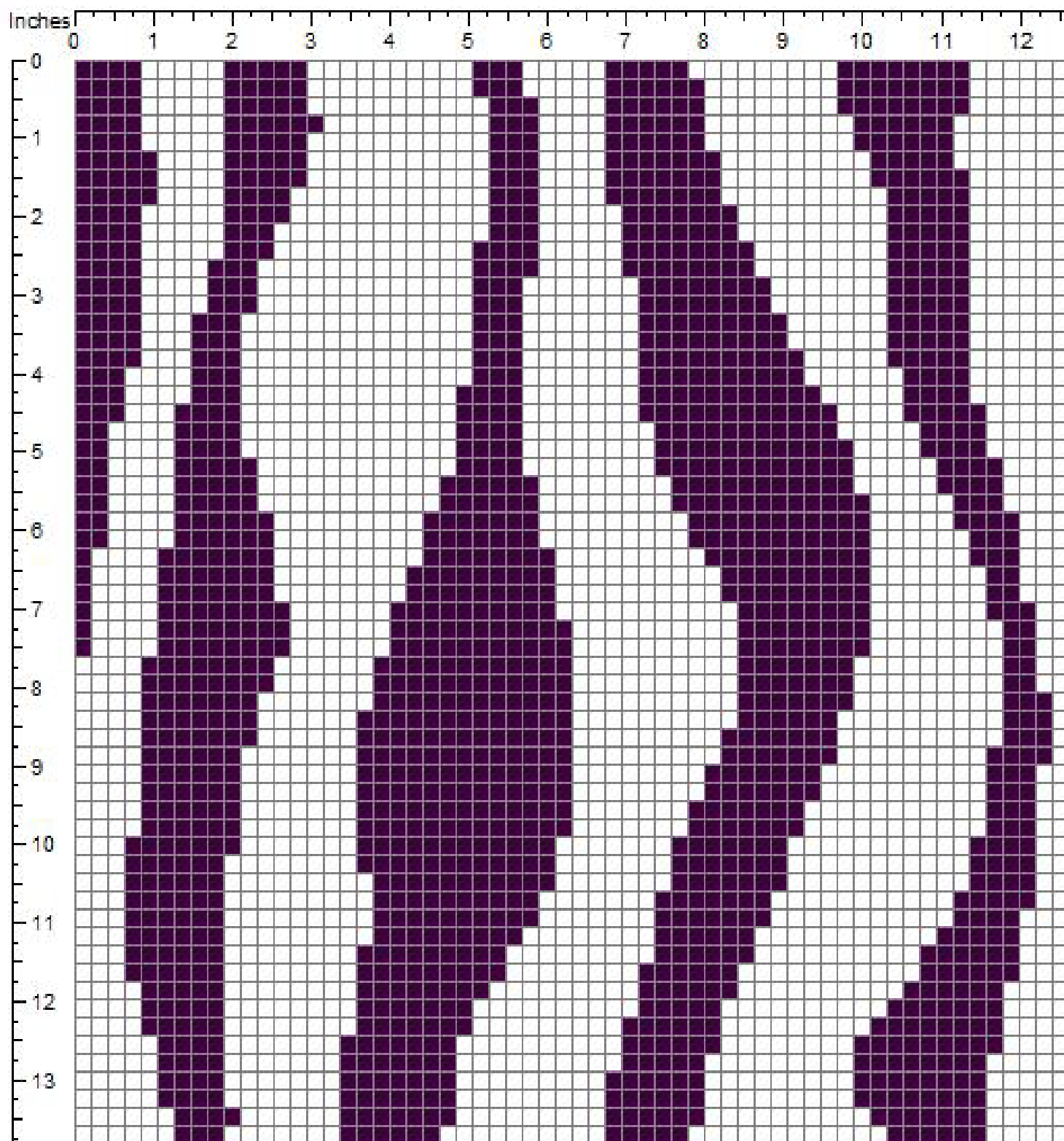
FINISHED LOOK



PATTERN



Graph Chart



zebra stripes

Company: yarnyokel.com
Web site: www.yarnyokel.com
Author: designed by yarnyokel.com
Copyright: 2010

INSTRUCTIONS:

Starting at bottom of pattern chain 181. Chain 3 to turn which will count as first double crochet of first row. Chain 2 more and double crochet in 9th chain from hook to complete bottom right open square of row 1. Continue following pattern for first row reading pattern right to left. After completing first row, chain 3 to turn to start next row. Continue following pattern until all rows are complete. At end of row 60 fasten off.

1

MATERIALS (based on crochet cotton size):

Using Crochet Cotton no. 30: about 360 yds, steel crochet hook US size 11 or SIZE FOR GAUGE.

APPROXIMATE FINISHED SIZES:

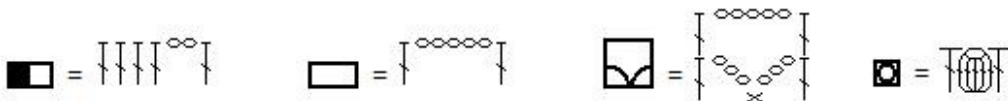
Using Crochet Cotton size 30: width = 12.6 inches, height = 13.8 inches

GAUGE:

Using Crochet Cotton size 30: 10 squares = 2.1 inches, 10 rows = 2.3 inches

HOW TO READ PATTERN:

Each solid square is equal to 4 double crochets. Each open square is equal to 1 double crochet, followed by 2 chains, followed by 1 double crochet. The double crochet at the end of each square also counts as the first double crochet of the next square. For example, a solid square followed by an open square is 4 double crochets, 2 chains, 1 double crochet. See diagrams below:



Where "T" is the symbol for one double crochet, "o" is the symbol for one chain, and "x" is the symbol for one single crochet.

Can do this pattern in single crochet only with a size H hook, will create a great pillow.

MAKE two sew together and stuff

If doing it as filet chart.

Makes a great throw if doing in a Double crochet in each stitch. Using an H size hook. However follow the instructions but instead of chaining two and skipping two Just fill in the filet block with a double crochet. Changing colors throughout the pattern

---using regular worsted weight yarn-----
with size H hook 4 squares is three inches