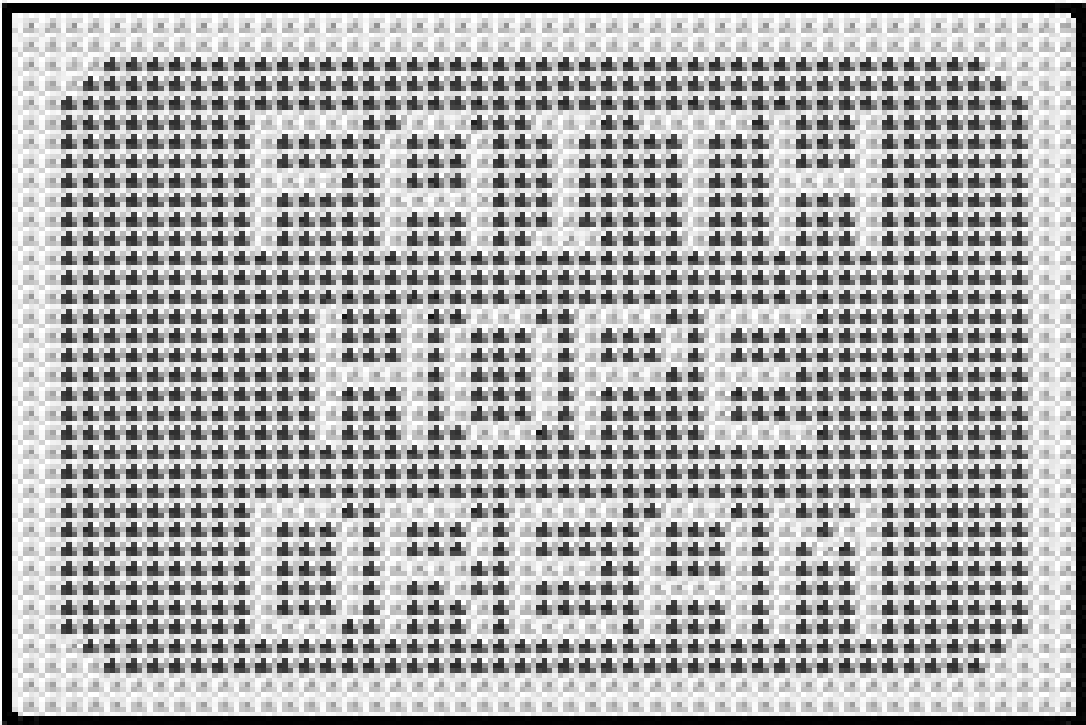


FAITH, HOPE, DREAM





FAITH, HOPE, DREAM

Web site: www.YarnYokel.com
Author: jf
Copyright: 2010, yarynyokel.com

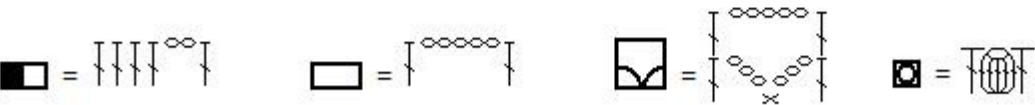
INSTRUCTIONS:
Starting at bottom of pattern chain 148. Chain 3 to turn which will count as first double crochet of first row. Double crochet in 5th chain from hook. Double crochet in next 2 chains to complete bottom right solid square of row 1. Continue following pattern for first row reading pattern right to left. After completing first row, chain 3 to turn to start next row. Continue following pattern until all rows are complete. At end of row 36 fasten off.

MATERIALS (based on crochet cotton size):
Using Crochet Cotton no. 10: about 201 yds, steel crochet hook US size 7 or **SIZE FOR GAUGE**.

APPROXIMATE FINISHED SIZES:
Using Crochet Cotton size 10: width = 11.3 inches, height = 9.0 inches

GAUGE:
Using Crochet Cotton size 10: 10 squares = 2.3 inches, 10 rows = 2.5 inches

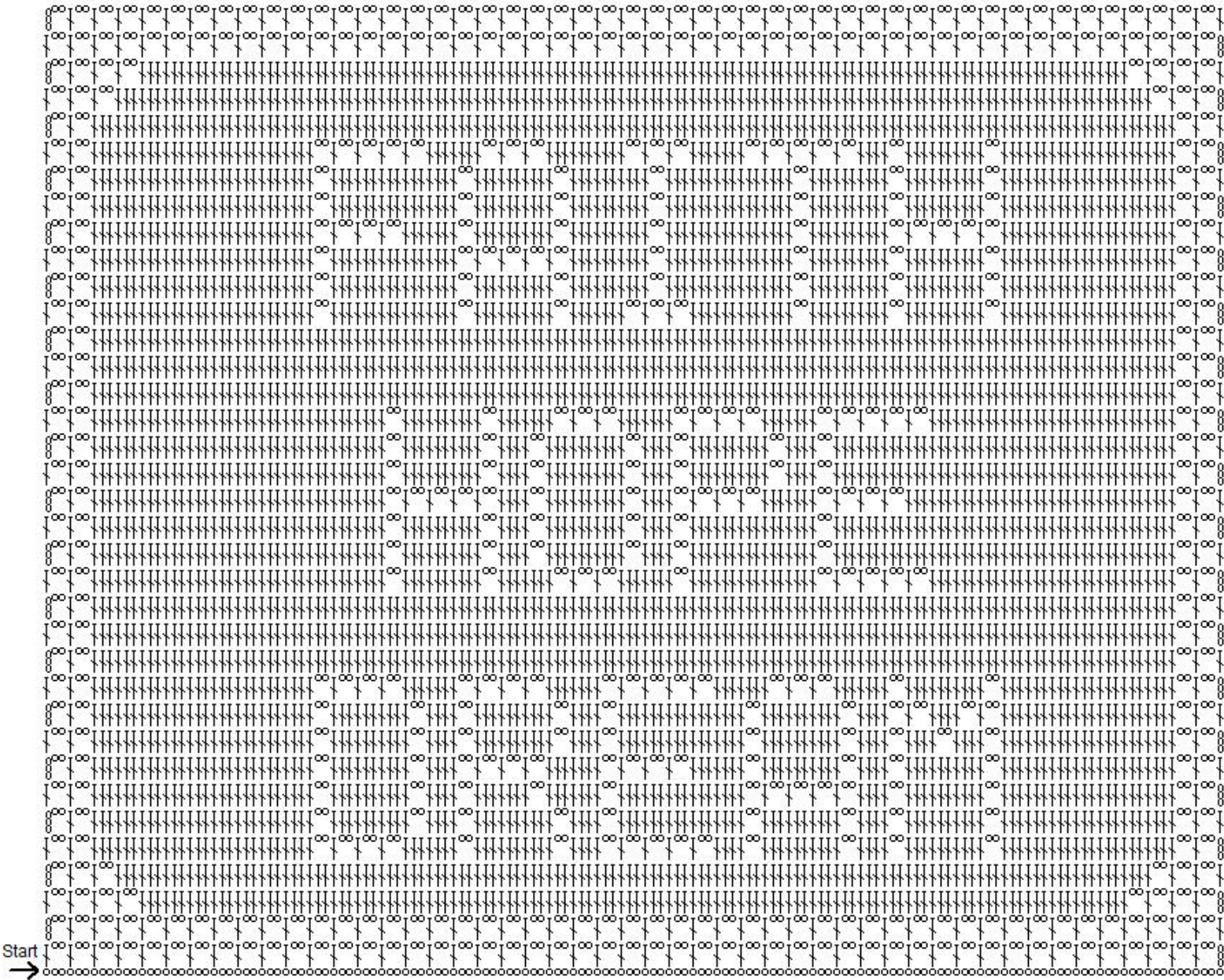
HOW TO READ PATTERN:
Each solid square is equal to 4 double crochets. Each open square is equal to 1 double crochet, followed by 2 chains, followed by 1 double crochet. The double crochet at the end of each square also counts as the first double crochet of the next square. For example, a solid square followed by an open square is 4 double crochets, 2 chains, 1 double crochet. See diagrams below:



Where "T" is the symbol for one double crochet, "O" is the symbol for one chain, and "x" is the symbol for one single crochet.

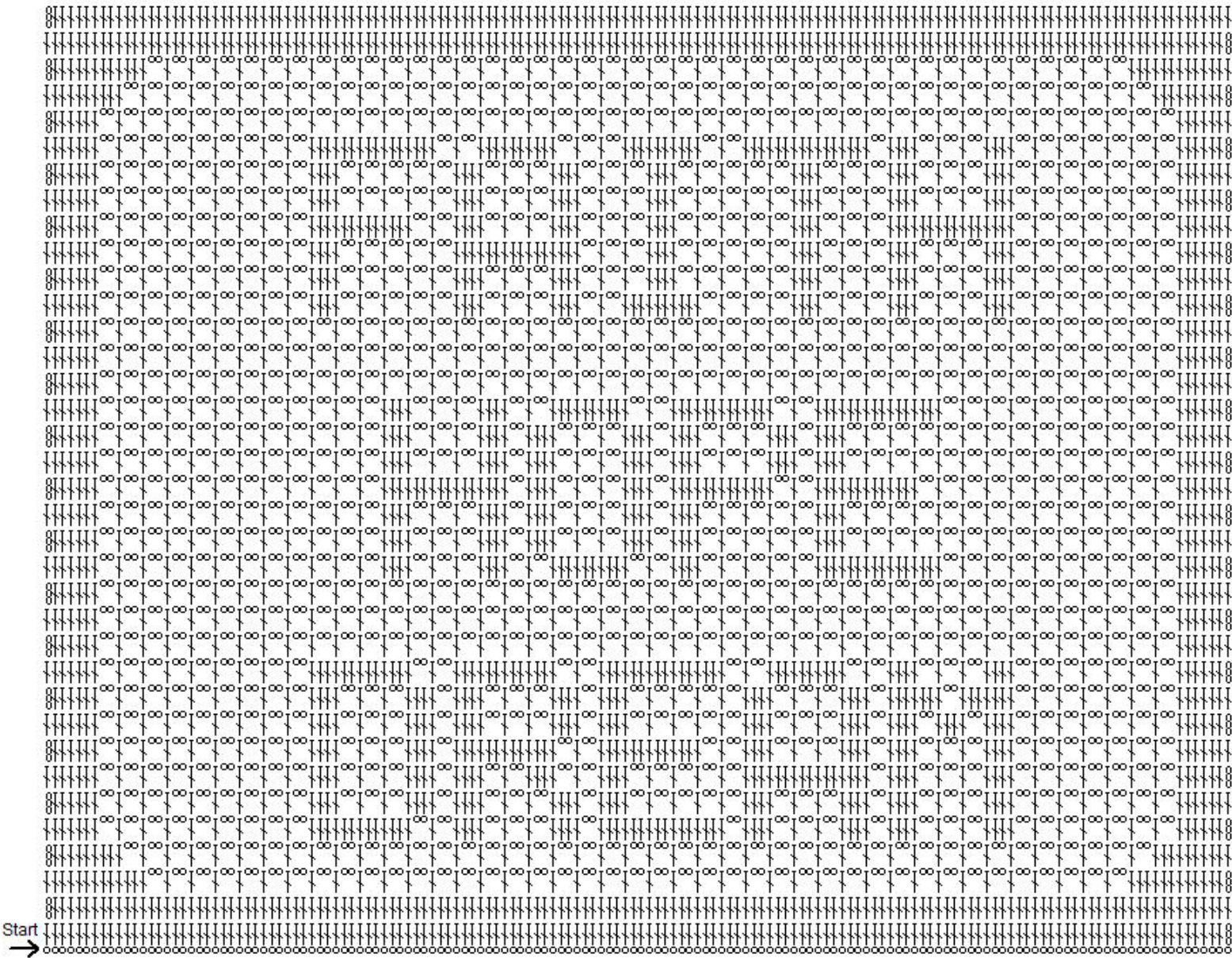
THE FOLLOWING PATTERN DIAGRAMS ARE OF REGULAR AND INVERTED STYLE. DEPENDING ON YOUR STYLE.

FAITH, HOPE, DREAM



Start
→

FAITH, HOPE, DREAM



INVERTED COMPLETED VERSION

FAITH, HOPE, DREAM

